

Since 1973, a gallery promoting the work  
of women artists and serving the community  
through public events

547 W. 27<sup>th</sup> Street, Suite 301  
New York, NY 10001  
(212) 367-8994  
(212) 367-8984 fax  
Tues. – Sat. 12 – 6PM  
[soho20@verizon.net](mailto:soho20@verizon.net)  
[www.soho20gallery.com](http://www.soho20gallery.com)

#### BOARD OF DIRECTORS

Nancy Azara  
Darla Bjork  
Joan Giordano  
Lucy Hodgson  
Eve Ingalls  
Jacqueline Joseph  
Desirée Koslin  
Francine LeClercq  
Patricia Mann  
Cynthia Mailman  
Herb Maletz  
Nancy Myers  
Vernita Nemec

#### BOARD OF ADVISORS

Linda Cunningham  
Ann Sutherland Harris  
Harriet Lyons  
Cynthia Navaretta  
Faith Ringgold  
Miriam Schapiro

#### GALLERY DIRECTOR

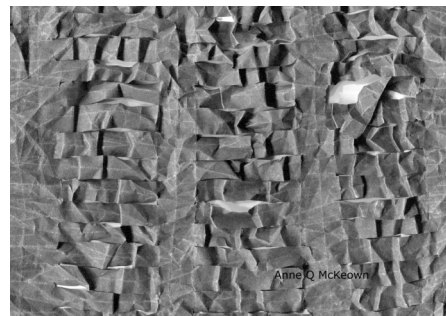
Jenn Dierdorf

SOHO20  
C H E L S E A

For Immediate Release:

**ANNE Q McKEOWN**  
Eleven Thousand Nights  
October 4 – October 29, 2011

SOHO20 CHELSEA GALLERY  
547 West 27th Street, Suite 301  
New York, NY 10001



Reception: Thursday October 6<sup>th</sup>, 6-8pm

SOHO20 Gallery Chelsea is pleased to announce *Eleven Thousand Nights*, new work by Anne Q McKeown. The exhibition features handmade paper installations.

McKeown's work looks at memories, mementos, moments left behind. Memories decay; we can lose hold and memories slip into the lost. Her images recall interactions that continue to exist in the consciousness but are isolated. They are no longer living or changing or bringing forth more.

*Eleven Thousand Nights* is built with paper, hand made, manufactured and recycled. Pure sheets of cellulose exist after two millennia, lesser sheets crumple into dust in two decades. Here paper expresses temporality, its shift from form to dust. McKeown slices and crumples her handmade paper. It is fingered like worry beads forming wrinkles and cracks. She manipulates newsprint with water and hands crafting objects from a leftover record of life. Paper is marked by time and worry.

The earth's winds cause change; disasters throw the stuff of lives into air, into fields of space around one. The stuff of McKeown's work reaches out, reaches up to become temporary, unsupported steps for thought's energy to travel out, away. One will never find the other again. Only see and feel the spinning memories of joy and pain, wondering and marveling that they once existed.

Anne Q McKeown is an artist whose practice includes painting, printmaking and handmade paper. Her work involves exploration. She makes and takes apart systems using color, chance and intuition. She exhibits nationally and internationally; her work has been shown in Japan, Belgium, Cuba, Canada, South Africa and Sweden. McKeown has worked with papermakers across the United States as well as in Cuba, Japan, and South Africa. She is the master papermaker at the Brodsky Center for Innovative Editions, Mason Gross School of the Arts where she collaborates with nationally and internationally recognized artists to make multiples of their work using paper as a medium. - [www.anneqmckeown.com](http://www.anneqmckeown.com)

For more information and images please contact gallery director **Jenn Dierdorf** at **212.367.8994** or email at **[Soho20@verizon.net](mailto:Soho20@verizon.net)**

*This exhibition is made possible through a generous fellowship from Soho20Chelsea*